



1st week: the **London** experience, at  
Burlington School

2nd week: the top school experience, at  
**Cheltenham Ladies' College**

**SUMMER OF 2023**



# YOUR BRITISH HOLIDAYS

An innovative programme which combines language  
school and traditional camp entertainment





# YOUR BRITISH HOLIDAYS



Big Fish Camp offers an innovative programme which combines language school and traditional camp elements. An intensive English course and everyday London excursions await the campers during the first week in London. The second week also includes studying the language and excursions, but at a more relaxing pace, and withing a different setting: a top English private school.

LONDON

## 1ST WEEK

Campers will live in London, on the Burlington school campus, 15 minutes away from the city centre. Three hours of English lessons daily plus visits to the most prominent places of London and its surroundings.

## 2ND WEEK

Campers will live in a prestigious private school in Cheltenham, learn English with teachers from different corners of the world, but also complete project work, the results of which can be added to their CVs or portfolios.

During these 2 weeks, campers will:

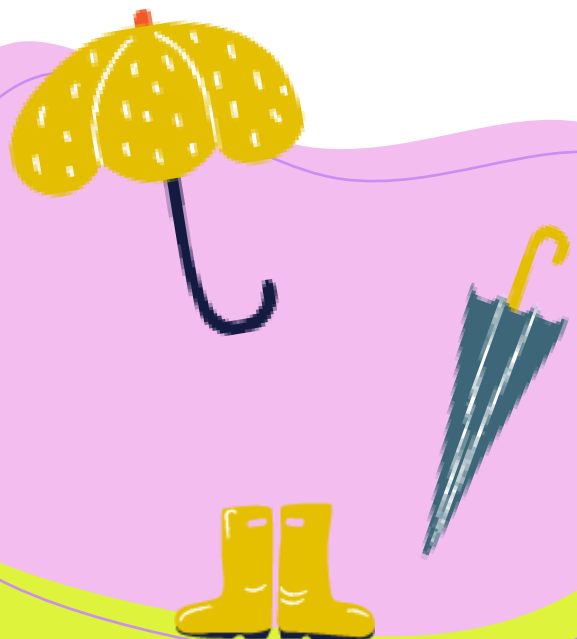
- fully immerse themselves in English study and practice;
- meet peers from all over the world and create lifelong connections;
- have (at least) 8 excursions, as well as complete one project that will improve their chances to get to a top University in the future.





# ENGLISH LESSONS

«To have another language is to possess a second soul» – Charlemagne



Modern reality has shown us that English is everywhere. Moving to another country, enrolling in a foreign university or school, finding common ground with others or getting an attractive job offer - English is a must.

And the best option to study and practice English is by fully immersing yourself in this environment: 24/7 for 2 weeks - no escape from the English omnipresence 😊



## ENGLISH 24/7

### 35 HOURS OF ENGLISH LESSONS DURING 2 WEEKS

English programme consists of 2 parts. Firstly, reinforce the basics: **focus on grammar and vocabulary enrichment**. Secondly: **practice, as practice makes perfect**. Campers will apply their knowledge in real-life projects, and master the speaking element during Speaking clubs.

On top of that, **everyday communication, excursions and evening events are also conducted in English**. We've already told you that this is a full immersion package!

### 1ST WEEK

#### 3 HOURS

of English lessons  
everyday

#### UP TO 15 STUDENTS

in a group, formed  
according to their age  
and English level

#### PRACTICE

of Reading, Speaking,  
Writing and Listening

#### PERFORMANCE CERTIFICATE

from school accredited by  
**British Council**

### 2ND WEEK

#### 1,5 HOURS A DAY

classical English  
lessons

#### 2,5 HOURS A DAY

campers work on their  
projects (also in English)

#### 1 HOUR A DAY

of speaking clubs on the  
most popular and  
interesting topics

#### UP TO 12 CHILDREN

in a group, formed  
according to their age and  
English level



# CAMP PROGRAMME

The cultural part of our camp programme is as rich as the English learning part. It's also a lot of fun 😊

During the first week, campers have **excursions** to the top London attractions and sights. The second week is full of project work , during which they **will feel like students of a British private school**. We also want a really practical result: that kids can include the results of these projects **to their CVs or portfolios**.



\* repairment of a wind turbine - an issue always faced by Marvel tech heroes (London, Science Museum, Interactive Exhibition of modern professions)

Every element of our programme includes multicultural communication and full immersion into English speaking community. Every activity aims at:

- pronunciation improvement
- overcoming the language barrier
- spoken English improvement
- cultural enrichment
- discovering how people live and study abroad
- developing planning and managing skills







# 1ST WEEK PROGRAMME

There are 2 options for the excursions:

- 5 half-day thematic excursions: British Arts and Culture **or** UK Science and History
- 1 full-day excursion

## OPTION 1

### BRITISH ARTS AND CULTURE

Learning English through the cultural heritage of the great British people:

- Iconic Westminster
- Shakespeare's Globe
- National Gallery
- Theatreland Walking Tour
- West End Shopping
- Brighton Trip



## OPTION 2

### UK SCIENCE AND HISTORY

Finding out about historical events and great inventors - from the Great Fire of London to informational technologies, from Ada Lovelace to Mary Seacole:

- Westminster Tour
- Science Museum
- View from the Shard
- City walking tour
- Tour of Greenwich
- Trip to Cambridge





## 2ND WEEK PROGRAMME

The second week is devoted to project work: children choose 1 project out of three, and stick with it for the entire week.

The goal is to **finalise a project that you can add to your portfolio/CV**, that will **add value** and **open up opportunities**, when it'll come to your future.



### DEVELOPING SKILLS:

- creative and critical thinking
- non-standard problem solutions
- financial literacy
- time-management
- teamwork
- planning



## 2ND WEEK PROGRAMME: PROJECTS

### BUSINESS AND MARKETING

**Create, plan and run a real event.** Campers will figure out what budgeting is, find out the basics of Marketing, SMM, PR and MVP. Event examples: Movie Night, Station Fair with sticker creation, photo zone, henna drawing etc.

### ART AND CREATIVITY

**Re-making famous masterpieces.** Recreation of the main character's image and visualisation of a painting's entourage. Photoshoot, exhibition and creation of a portfolio and virtual art gallery.

### UNILAB

**A boot camp on how to get to the best university or course for you.** Campers will find out about the enrollment possibilities and life in a foreign country, how to prepare for exams and write a motivational letter. They will do a proforientational test and plan how to get into a university of their dream.





## 2ND WEEK PROGRAMME: EXCURSIONS

While staying in Cheltenham, campers will have 2 half-day excursions: in the city and to Cotswolds National Landscape.

### EXCURSION IN CHELTENHAM

Cheltenham is a quintessential British area: home to royal Castles, the most famous horse-race event, as well as one of the top private schools in the UK (where we'll be residing!). Our excursion to the city-centre will be organised in a quest format & will include tasks like:

- wave as the late-Queen (and current King) does;
- identify architectural peculiarities in the local castles;
- scoop out an ancient mystery from locals.



### EXCURSION TO COTSWOLDS

We will visit Cotswolds National Landscape, which has preserved its authenticity since 1380. We will walk along picturesque little streets and look at peculiar local houses, built long ago with a specific purpose (storing wool!), as that used to be a main business direction in the old times.

Cotswolds excursion has 2 options to choose from: a hike and a cycle tour. To get the most of the time among beautiful landscapes, we'll get to the location by bus and spend half of the day there.







## EVENING PROGRAMME

Every camp day is full of different activities. The morning starts with excursions or projects, and at noon campers study English. In the evenings, we also keep rolling: special evening events, discos, quizzes, and a London night walk:

- Icebreakers
- Team Building
- Mini Olympics
- Party in the park
- Movie Night
- Karaoke
- City walks





# ACCOMMODATION: WEEK 1

Children will live in South London, Balham. It's the most attractive part of the city - famous for its cafes, parks and gardens. Location: Burlington School, located a few minutes' walk from 3 picturesque parks and 20 minutes from the Buckingham Palace (via the Northern line of the tube/metro).



MORE LOCATION  
PHOTOS [HERE](#)

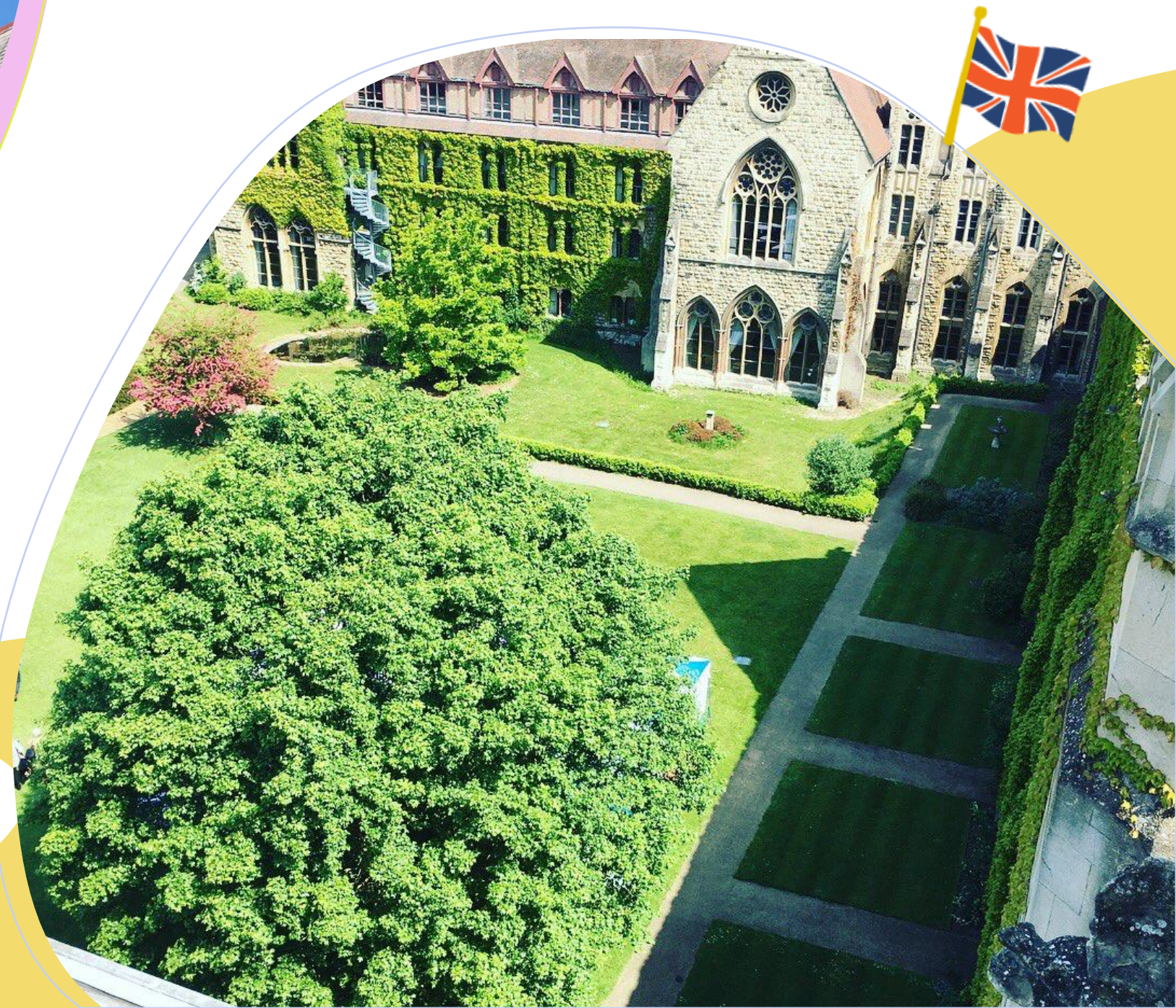






## ACCOMMODATION: WEEK 2

Campers live at Cheltenham Ladies' College - a school established in 1853, and one of the most consistently ranked top schools of the UK. The city is widely known for its architecture, gardens and jazz festivals. It's close to Oxford (1h), London (2h) or Bristol (57 min!).



MORE LOCATION  
PHOTOS [HERE](#)



# IN A NUTSHELL

## 13 DAYS

— the length of one session

## 7 DAYS OF OF LONDON

— learning English and plenty of excursions in London

## 6 DAYS EXPERIENCE

of a top-boarding private school

## 35H OF ENGLISH LESSONS IN TOTAL

with qualified, native English teachers

## 14 HOURS OF PROJECT WORK

results of which can be included in a CV

## 7 HALF-DAY EXCURSIONS

and 1 full-day excursion to the London sights

## ACCOMPANIMENT

by Big Fish Academy counsellors 24/7

## AGE OF CAMPERS:

10-17 years old

## ACCOMMODATION

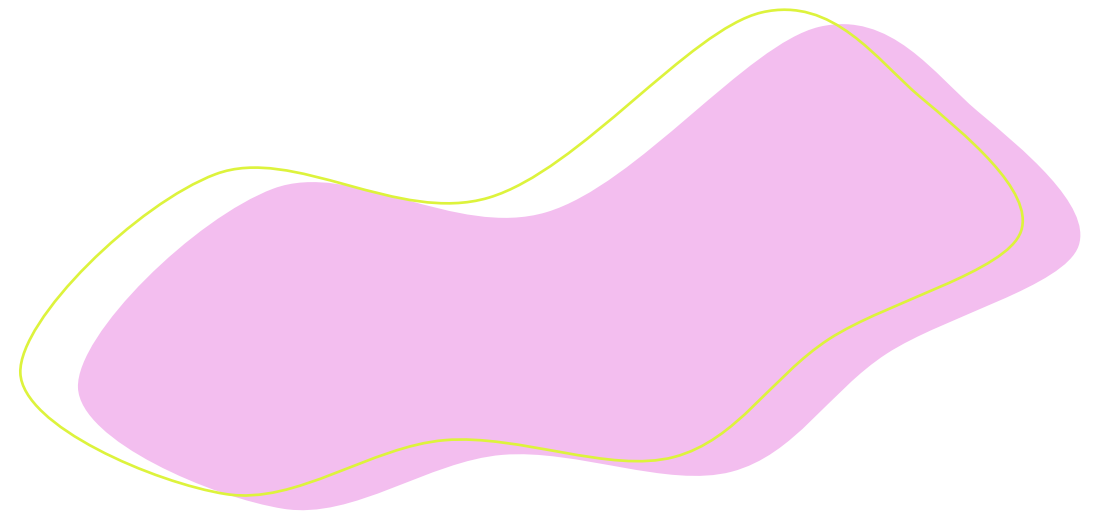
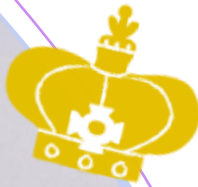
- beautiful locations in London and Cheltenham
- London: 2 to 6 beds/room, Cheltenham: 2 to 4 beds/room
- modern toilets and showers on the floor
- technologically advanced classrooms and big event halls
- picturesque accommodation area



## THREE MEALS A DAY

- a self-service restaurant
- 2 menu options for every meal
- vegan and vegetarian menu
- allergen elimination diet





## SESSION DATES IN 2023

Session 1  
**02.07 – 15.07**

Session 2  
**09.07 – 22.07**





# PRICE

**£ 2550**

*\* Flight tickets and visa (if needed) are not included*

## **GROUP TRANSFER (5 AND MORE KIDS)**

two-way to the airport per 1 child in the group:

- Heathrow - £85
- Gatwick - £90
- Luton - £125
- Stansted - £130

## **INDIVIDUAL TRANSFER**

from and back to the airport

- Heathrow - £280
- Gatwick - £330
- Luton - £370
- Stansted - £390

+ £80 – per student both ways – unaccompanied minor fee for campers under 14

*\* Transfer price can reduce in case if your plane arrives at the same time as other campers' plane, who have a group transfer.*





# BRING YOUR CHILD GIGABYTES OF UNFORGETTABLE EXPERIENCE!

[www.bigfish.academy](http://www.bigfish.academy)

